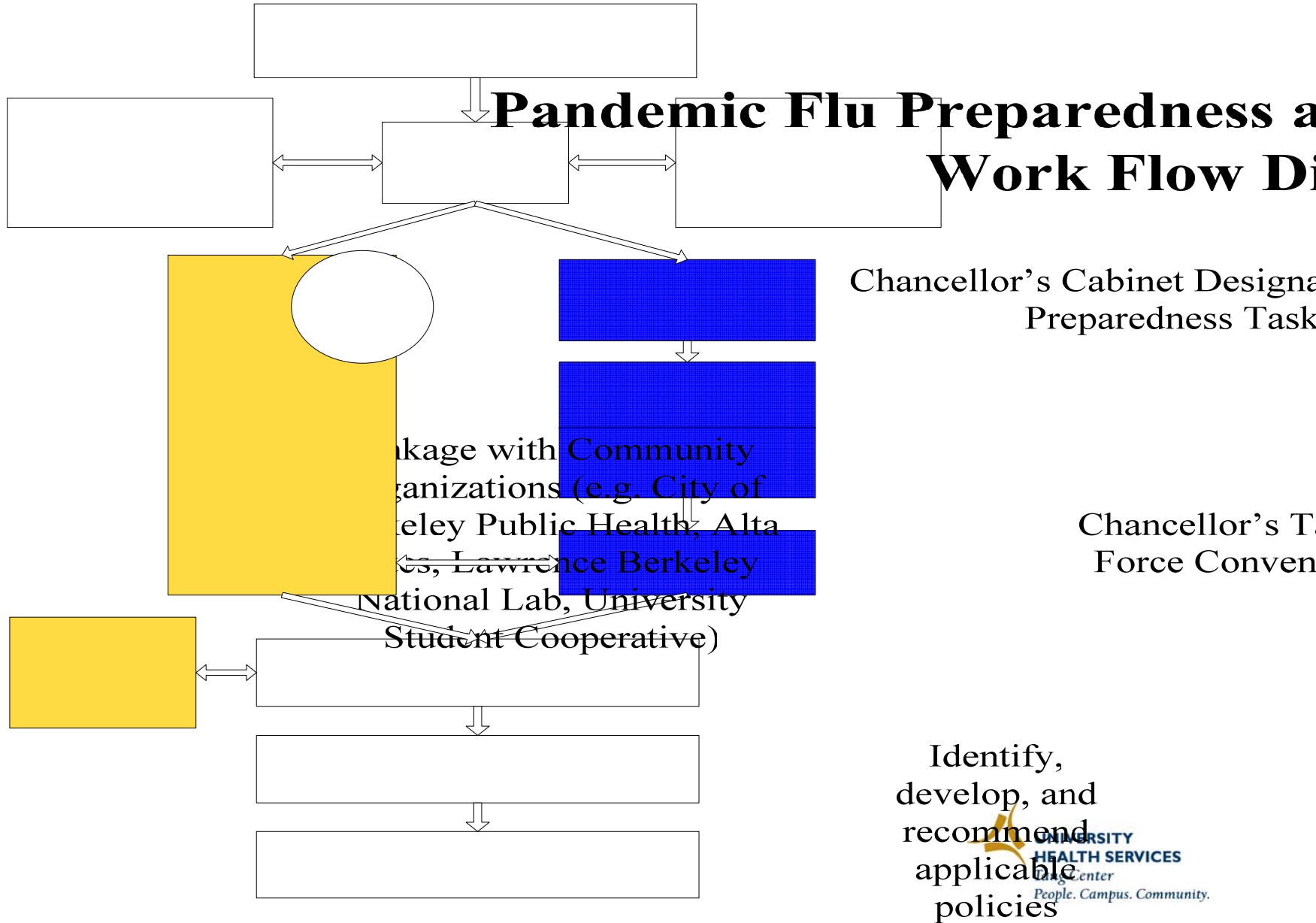
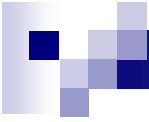


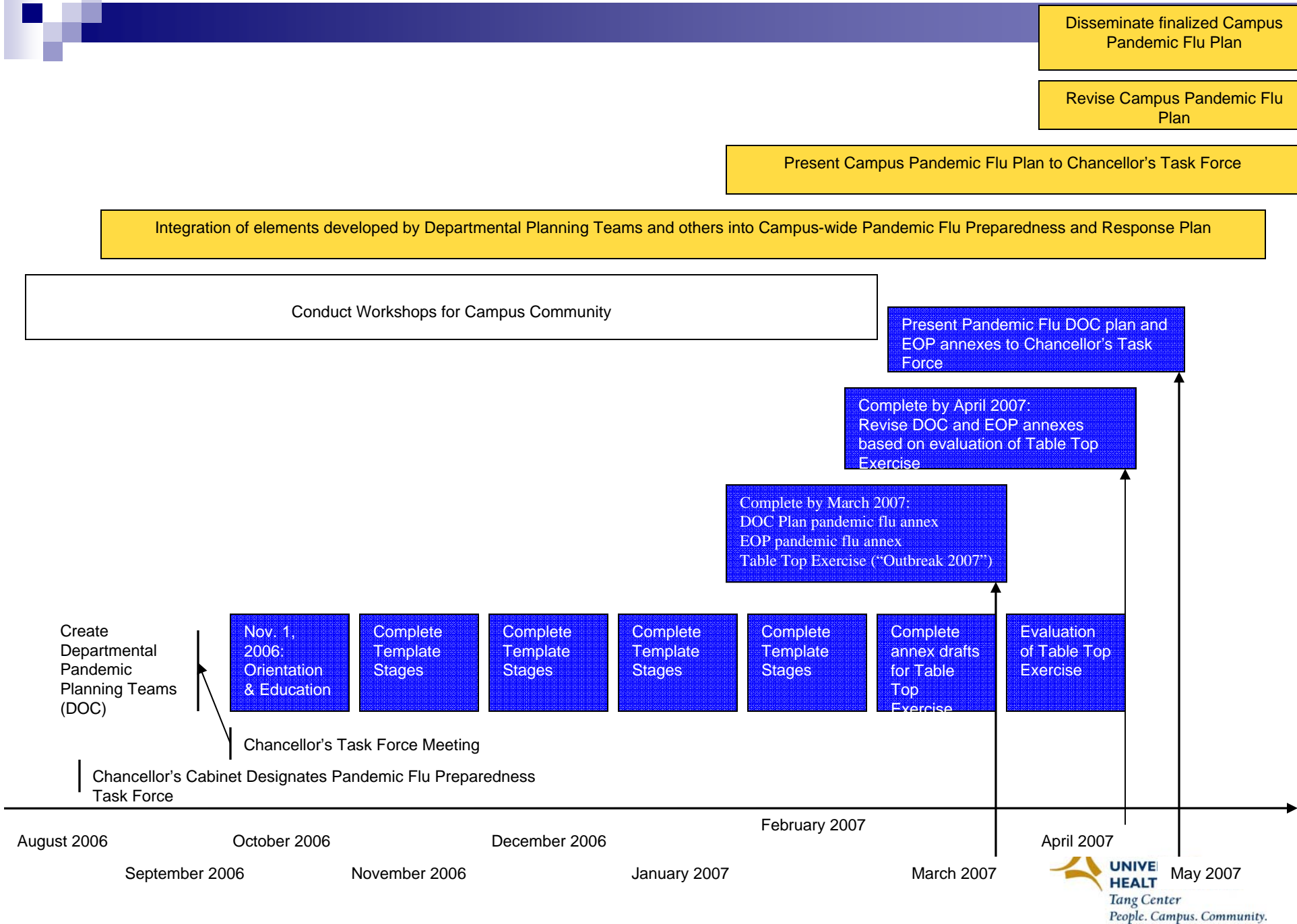
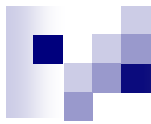
Pandemic Flu Preparedness

Orientation to Pandemic Flu Planning
UC Berkeley
Peter S. Dietrich MD, MPH
November 1, 2006



Integration of elements


created by the





Next Steps – DOC Planning

- EOC/DOC Education and Training
- Several DOC “Working Meetings”
 - Completion of Planning Templates
- Contact – Office of Emergency Preparedness
 - thm@berkeley.edu



Next Steps – Task Force

- Table Top Exercise – March 28, 2007
- DOC Presentations – April 25, 2007
- Contact – Michelle Deverell, Pandemic Preparedness Coordinator
 - mdeverell@uhs.berkeley.edu

More Information

- <http://www.uhs.berkeley.edu>
- DOC/EOC Planning Contacts:
 - Tom Klatt
 - tklatt@berkeley.edu
 - Treacy Malloy
 - thm@berkeley.edu
- Pandemic Flu and Campus Planning Contacts:
 - Pete Dietrich MD, MPH
 - psd@uhs.berkeley.edu
 - Pam Cameron RNNP
 - pcameron@uhs.berkeley.edu
 - Michelle Deverell MPH
 - mdeverell@uhs.berkeley.edu